

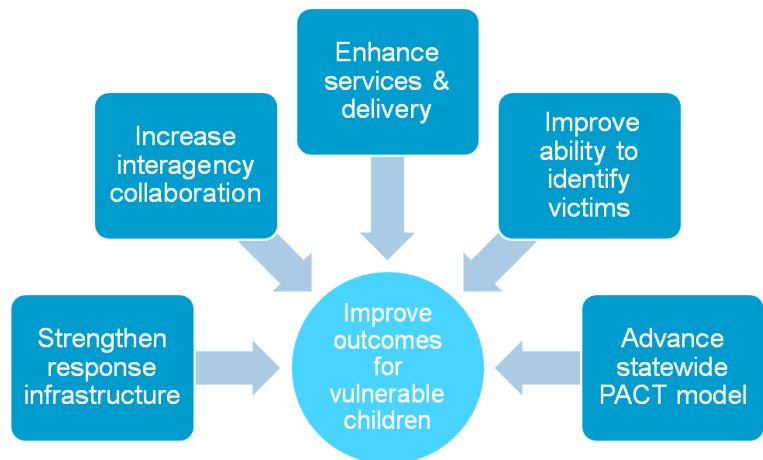
Preventing and Addressing Child Trafficking – PACT

What is PACT? PACT's mission is to implement a safe and county level coordinated cross-system, interagency collaborative model that effectively serves child labor and sex trafficking victims in California. Protocols have been built on existing collaborations at the state level; and funding leveraged to provide county-based support, ensuring that child-serving agencies coordinate to more effectively serve a population of extremely vulnerable children and youth. As one of nine federal 5-year grants (2014 - 2019) awarded by the Children's Bureau, PACT has increased the efficacy of the child welfare systems' response to human trafficking through infrastructure development and strengthening of a multisystem approach.

PACT Leadership – In 2014 the California Department of Social Services contracted with Child and Family Policy Institute of California to administer the grant with a full time Project Director as the lead. The current Project Director, Melissa J. Gomez, is an anti-trafficking consultant with extensive macro and micro level experience in the anti-human trafficking and anti-violence fields. PACT has contracted with Resource Development Associates (RDA) to perform ongoing evaluation and a PACT Consultant Team made up of individuals with diverse lived experience and expertise provides guidance in the project's design, implementation and evaluation.

Shared Goals – Ten California counties' child welfare agencies participate in the PACT collaborative platform with a shared goal to improve outcomes for vulnerable children and youth.

- Alameda
- Los Angeles
- Madera
- Riverside
- Sacramento
- San Bernardino
- San Joaquin
- San Luis Obispo
- Santa Barbara
- Ventura



PACT's Phases

During the life-span of the project PACT has implemented four phases and is currently in the process of broadening the CSEC collaborative structure, program model and protocols to address child labor trafficking.

To implement a state and county level coordinated cross-system, interagency collaborative model that effectively serves child sex and labor trafficking victims

Broaden the collaborative structure at the state level and develop the collaborative infrastructure at the county level to support implementation of the PACT Program Model

Develop, pilot, and modify the PACT Program Model to address child sexual exploitation in California's child welfare system

Broaden the CSEC collaborative structure, program model, and protocols to more fully address Child Labor Trafficking

Disseminate lessons learned and program information to other California counties and states, and continue to sustain the project in the pilot counties

Preventing and Addressing Child Trafficking – PACT



RDA conducted research and evaluation, increasing opportunities to share key findings and lessons with other California counties and states to improve a collaborative child trafficking response.

Short-Term (1-2 Years)

Improved child-trafficking response infrastructure
Multi-disciplinary collaboration
Increased awareness of trafficking
Improved data capacity
Increased satisfaction with the system change process
PACT model seen as an effective model for dissemination

Intermediate (3-4 Years)

Improved cross-system response to child trafficking
Improved service delivery
Increased resources for research
Improved organizational functioning
Increase in protective factors that prevent trafficking
Decrease in risk factors that contribute to trafficking

Long-Term (5+ Years)

Decreased incidence of child trafficking
Pilot counties are effective mentors for other counties
California is an effective mentor for other states

Key Lessons

- A designated PACT county coordinator ensures that policies and protocols reflect the needs of exploited children and youth.
- Regular opportunities for statewide and cross-county collaboration, annual convenings, remote and in person meetings, improve the overall child trafficking response.
- Consistent quality training and practical application of knowledge is essential to effectively serve at-risk and vulnerable children and youth.
- Meaningful input by those with lived experience, including youth voice, in the design, implementation and evaluation of the program is critical to employ a trauma informed approach.
- Additional research, protocol development, and training is needed for counties to integrate their current “CSEC Model” to identify, assess and serve all trafficked children and youth, specifically those experiencing labor trafficking.

